

DMC-TZ5 Digital Camera Firmware Installation Instructions

Table of Contents

	Table of Contents	1
1	Check Firmware Version	2
2	Preparation of SD Card	3
3	Download Firmware	3
4	Copy Firmware to SD Card	4
	4.1 Using SEND TO	4
	4.2 Using COPY & PASTE	4
	4.3 Using DRAG & DROP	5
5	Install Firmware	6
	5.1 DMW-AC5 Optional AC Adapter Not Available	6
	5.2 DMW-AC5 Optional AC Adapter Is Available	6

1 Check Firmware Version

- 1) Insert an SD Card with at least one image (photo/picture) into the SD Card Slot of the camera.
- 2) Set the camera's Power Switch (A) to ON.
- 3) Set Playback/Recording Switch (B) to PLAYBACK.
- 4) While holding down the E.ZOOM button (C), press the MACRO button (D).

NOTE: This will display the firmware version on the LCD screen (E).

- 5) Power the camera OFF after checking the firmware version.

CAUTION: If the firmware version in the camera is the same or higher than the firmware version downloaded or received, a firmware update is unnecessary.



2 Preparation of SD Card

- 1) Insert an 8 MB or larger SD Card into camera.
- 2) Format the SD Card using FORMAT option in camera menu.
- 3) Take 2 photos with camera.
- 4) Remove SD Card from camera.
- 5) Power the camera off.

3 Download Firmware

- 1) Left click on the **DOWNLOAD** icon for the DMC-TZ5 Digital Camera firmware.

- **DMC-TZ5 Digital Camera Firmware Update**

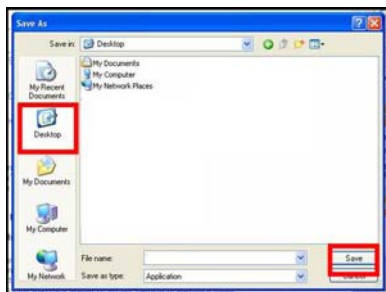


- 2) Left click on **SAVE**.



The file name displayed should be **TZ5_a.bin**.

- 3) Left click on **DESKTOP**, and then left click on **SAVE**.



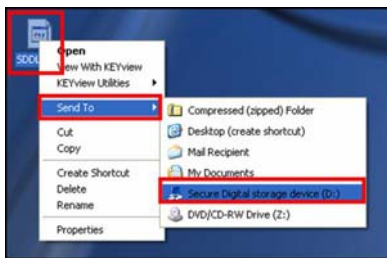
NOTE: The TZ5_a.bin file will be placed on the DESKTOP.

4 Copy Firmware to SD Card

Use one of the below methods to copy the firmware file to the SD Card.

4.1 Using SEND TO

- 1) Insert the SD Card with the 2 photos into the SD Card Slot in the PC or USB Reader/Writer connected to the PC. (**NOTE:** If an SD Card Slot or USB Reader/Writer is not available, the camera can be connected to the PC via USB to transfer the firmware update to the SD Card.)
- 2) Right click on the **TZ5_a.bin** icon on the **DESKTOP**, mouse over **SEND TO**, and then left click on **SECURE DIGITAL STORAGE DEVICE** (the drive designated as the SD Card Drive).

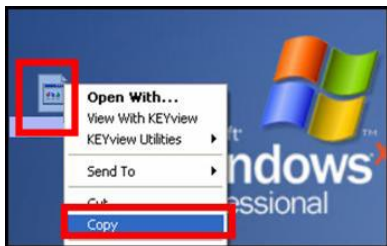


NOTE: The below window will be displayed during the copying process.



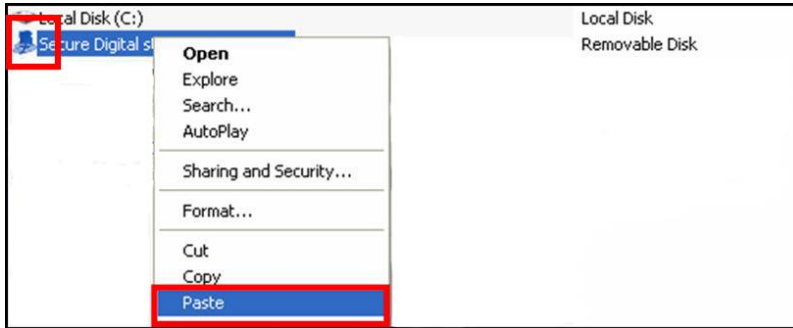
4.2 Using COPY & PASTE

- 1) Insert the SD Card with the 2 photos into the SD Card Slot in the PC or USB Reader/Writer connected to the PC. (**NOTE:** If an SD Card Slot or USB Reader/Writer is not available, the camera can be connected to the PC via USB to transfer the firmware update to the SD Card.)
- 2) Right click on the **TZ5_a.bin** icon on the **DESKTOP** and then left click on **COPY**.



- 3) Double click on the **MY COMPUTER** (XP) or **COMPUTER** (Vista) icon on the **DESKTOP**.

4) Right click on the **SD Card Drive**, and then left click on **PASTE**.



4.3 Using DRAG & DROP

If an icon for the SD Storage Device has been placed on the DESKTOP, the following procedure can be used to copy the firmware file to the SD Card.

- 1) Insert the SD Card with the 2 photos into the SD Card Slot in the PC or USB Reader/Writer connected to the PC. (**NOTE:** If an SD Card Slot or USB Reader/Writer is not available, the camera can be connected to the PC via USB to transfer the firmware update to the SD Card.)
- 2) Left click on the **TZ5_a.bin** icon on the **DESKTOP**, hold down the left mouse button, and drag the file to the **SD CARD DRIVE** icon on the **DESKTOP**.



5 Install Firmware

5.1 DMW-AC5 Optional AC Adapter Not Available

1) Charge the battery fully.

NOTE: If the battery is not fully charged, the screen shown in **Figure 1** will NOT appear.

2) Ensure the Power Switch is set to OFF.

3) Insert the fully charged battery.

NOTE: Proceed to STEP 4) below.

5.2 DMW-AC5 Optional AC Adapter Is Available

1) Ensure the Power Switch is set to OFF.

2) Plug the AC Adapter into an electrical outlet.

3) Connect the DC Output on the AC Adapter to the DC Input terminal on the camera.

4) Insert the SD Memory Card with the firmware update into the SD Card Slot.

5) Set Playback/Recording Switch to PLAYBACK.

6) Set the camera's Power Switch to ON.

NOTE: After the message PLEASE WAIT is displayed, the below screen will appear.



FIGURE 1. Start Version Up?

NOTES:

1. The firmware version varies according to the firmware version currently installed in the camera.
2. If a newer version or the same firmware version has already been installed in the camera, **Figure 1** will not be displayed. Instead, NO VALID PICTURE TO PLAY will be displayed. Please turn off the camera, remove the SD Card with the firmware update, and use the camera as is.

7) Press the **UP** button to highlight YES, and then press the **MENU/SET** button.



FIGURE 2. Start Version Up?



FIGURE 3. Menu Navigation Buttons

NOTE: Once YES is selected, the below screen will appear.

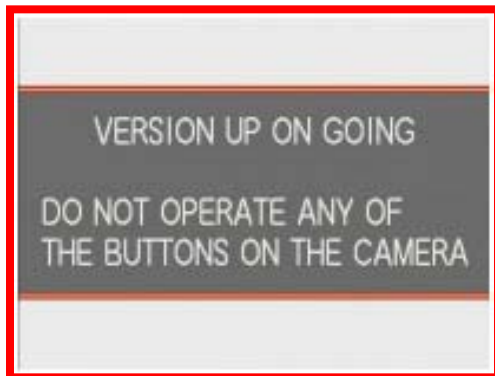


FIGURE 4. Version Up On Going

CAUTIONS:

Performing any of the following during the firmware update may damage the camera and are not recommended.

1. Do NOT turn the camera power OFF and ON.
2. Do NOT open the SD Card Slot.
3. Do NOT remove the SD Card.
4. Do NOT remove the AC Adapter.
5. Do NOT remove the DC Cable.
6. Do NOT remove the battery.

NOTE: Once the firmware update is complete, the camera will power off and then back on again automatically. The camera will also be reset to the initial mode.

8) Set the camera's Power Switch to OFF.

9) Remove the SD Card.

10) Use the steps in the **Check Firmware Version** section to verify the firmware version.